

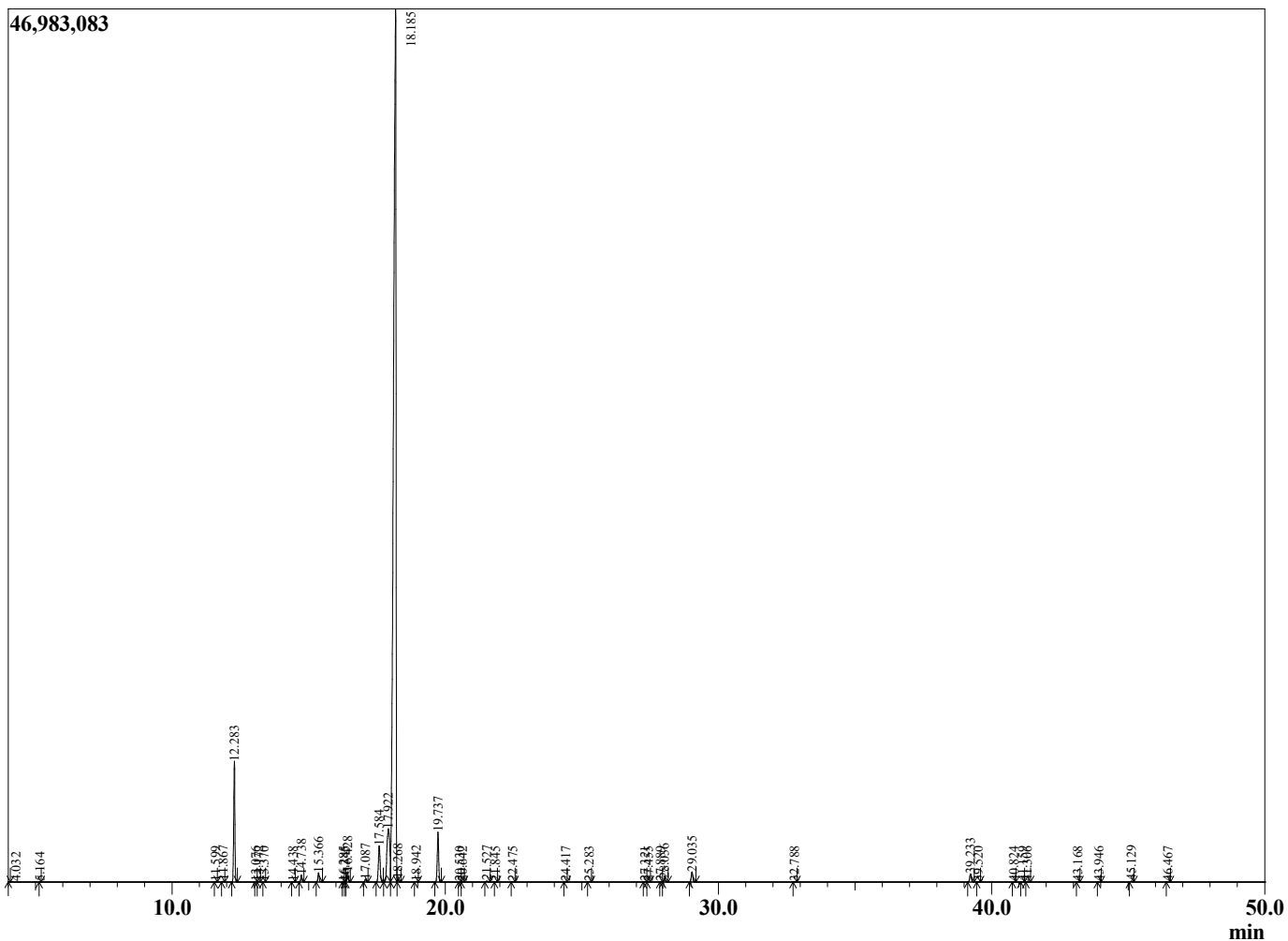
Sample Information

Sample Type : Essential Oil
 Sample Name : Eucalyptus globulus
 Injection Volume : 0.10

Eucalyptus Blue Gum
 Lot# AUD28-DE
 Country: Australia



Chromatogram Eucalyptus globulus



R.Time	Name	Area%
4.032	3-Methylbutanal	0.00
5.164	1-Pentanol	0.01
11.599	Hashishene	0.01
11.867	alpha-Thujene	0.03
12.283	alpha-Pinene	5.16
13.076	alpha-Fenchene	0.01
13.172	Camphene	0.02
13.370	Thuja-2,4(10)-diene	0.00
14.438	Sabinene	0.02
14.738	beta-Pinene	0.32
15.366	Myrcene	0.45
16.285	Pseudolimonene	0.01
16.345	Unidentified	0.02
16.428	alpha-Phellandrene	0.50
17.087	alpha-Terpinene	0.15
17.584	para-Cymene	2.30
17.922	Limonene	5.47
18.185	1,8-Cineole	81.29
18.268	(Z)-beta-Ocimene	0.13
18.942	(E)-beta-Ocimene	0.04
19.737	gamma-Terpinene	2.52
20.530	cis-Linalool oxide (furanoid)	0.01
20.642	Pinol	0.01
21.527	Terpinolene	0.06
21.845	para-Cymenene	0.01
22.475	Linalool	0.02
24.417	Unidentified	0.00
25.283	trans-Pinocarveol	0.03
27.321	delta-Terpineol	0.02
27.455	Borneol	0.01
27.889	Unidentified	0.01
28.036	Terpinen-4-ol	0.18
29.035	alpha-Terpineol	0.58
32.788	Geraniol	0.01
39.233	alpha-Terpinyl acetate	0.50
39.520	Eugenol	0.01
40.824	Isoedene	0.00
41.159	alpha-Copaene	0.00
41.306	Geranyl acetate	0.00
43.168	alpha-Gurjunene	0.02
43.946	trans-beta-Caryophyllene	0.00
45.129	Aromadendrene	0.06
46.467	Alloaromadendrene	0.01
		100.00